

# Calvin Coolidge High School

## Building a Garden, Growing a Community



In an era when it's becoming increasingly important for citizens to become good stewards of the natural and built environment, Calvin Coolidge High School (CCHS) and its Alumni Association (CCAA) are collaborating with the American Society of Landscape Architects' Potomac Chapter (ASLA-PC), the Architecture, Construction, and Engineering Mentoring Program of Greater Washington, DC (ACE-DC), and the District of Columbia's Office of Public Education and Facilities Modernization (OPEFM) to advance environmental education as an integral part of campus life. Together, the goal is to provide opportunities for outdoor environmental education, enhance the sustainability and aesthetic quality of the school grounds, and provide an outdoor space of which the students and community can be proud.

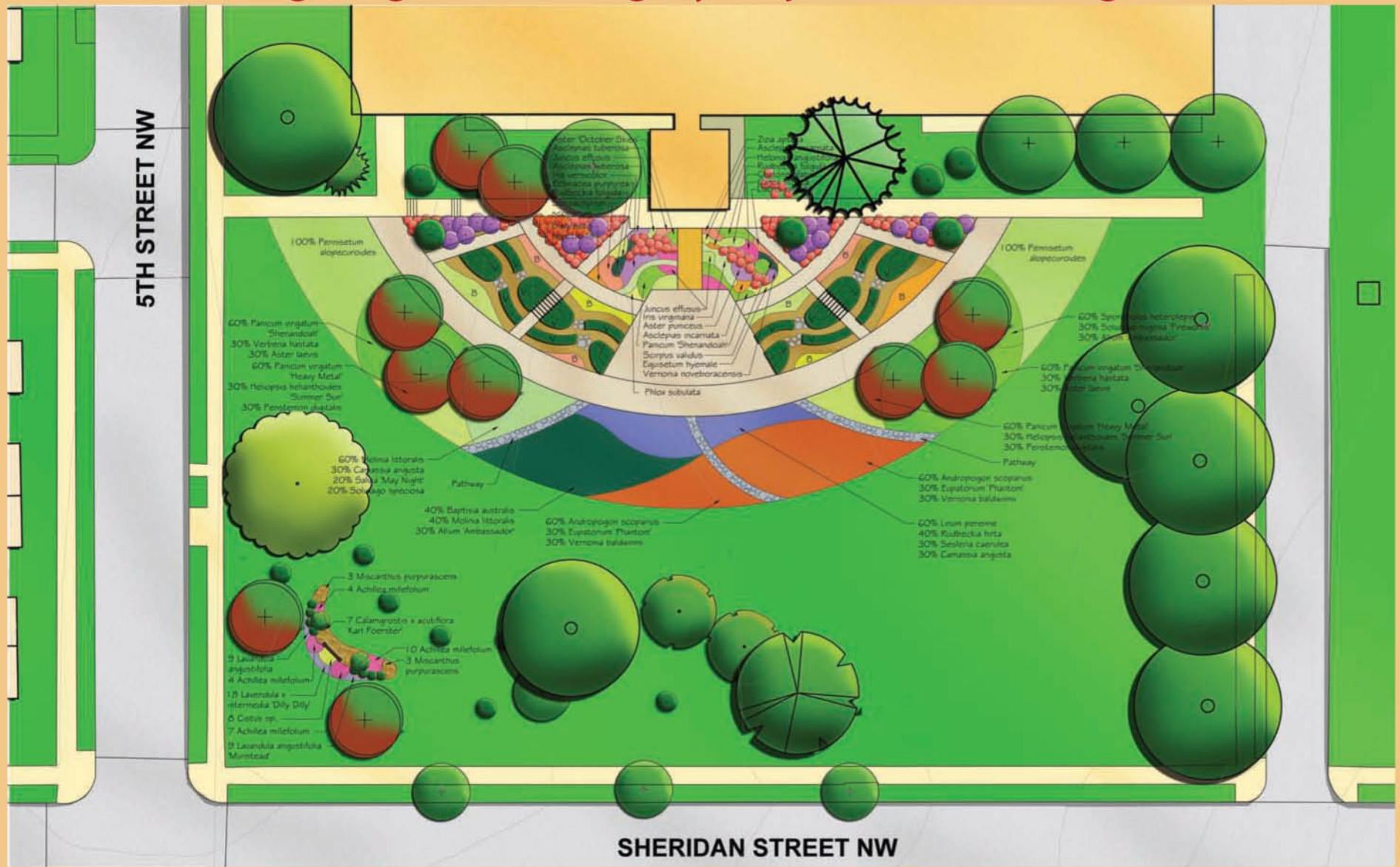
Each year, the local ASLA chapter coordinates a service-oriented Legacy Project in the host city of ASLA's annual national conference, which was held on September 10th – 13th in Washington, DC. Companies from around the country that display their products at the conference donate the materials to build the project. Through an established relationship between ASLA and ACE, this year's project is located at Coolidge High School, which has a talented group of students involved in improving their campus.

The Legacy Project grew from ongoing work through ACE-DC and NSBE, which worked with the school administration and the alumni association to create designs for renovating and reusing the school's greenhouse, constructed in 1938 as part of the original campus. The goal is to return the greenhouse to a sustainable classroom for the students.

## The Greenhouse Garden + Outdoor Classroom



# Coolidge High School Legacy Project Garden Design



In April 2010, a community design day was held to create an outdoor campus master plan and design a garden near the greenhouse. Over 50 students, neighbors, teachers and alumni worked together to envision a future campus that incorporates sustainable design elements and spaces that can better connect the campus with the surrounding neighborhood. With this input, ASLA-PC volunteers prepared a master plan that identifies short- and long-term projects the school and alumni association can use to guide implementation of an engaging and sustainable learning environment. Drawings were prepared for the first phase, the Greenhouse Garden and Outdoor Classroom. DC OPEFM will be installing the infrastructure and Community Plant-It Days are planned for October 16th and November 13th, 2010 to install the gardens. The alumni association, together with the local community, has committed to maintaining the greenhouse garden, and will work with the school to implement additional improvements identified in the master plan as funding becomes available.



# Coolidge High School Legacy Project Master Plan

"A beautiful thing is going on here" , Terry Goings, Coolidge High School  
Potomac Chapter, ASLA and ACE Mentor Program



## Master Plan Legend

- 1. Greenhouse Garden
- 2. Street Tree Plantings and Maintenance
- 3. Phase I
- 3. Amphitheater
- 4. Memorial Walk & Plaza
- 5. East Outdoor Classroom
- 6. Art Mural
- 7. Green Roofs
- 8. Rain Gardens
- 9. Linear Plaza
- 9. Outdoor Plaza
- 10. School Sign
- 11. Green Street
- 12. Gateway
- 12. Geoblock or equivalent
- 13. Trees within Athletic Fields
- 14. Athletic Hall of Fame
- 15. Commemorative Garden
- 16. Walkway through Tree Grove
- 17. Walkway around swimming pool to Athletic Fields
- 18. Parking passes for teachers to use Takoma Recreation Center
- 19. Farmer's Market



Coolidge High School Greenhouse Gardens  
ACE Mentor Program / ASLA Legacy Project  
Spring 2010

6315 5th Street, NW  
Washington, DC 20011  
Ward Four





For more information on volunteering for Plant-It Days on October 16th and November 13th, 2010, maintaining the gardens, or other volunteer opportunities at Coolidge, please visit the Alumni Association's website at <http://www.cchs-aa.com>.

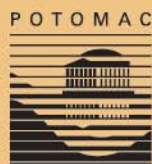
This project would not have been possible without the support of the following organizations:



ASLA

**The American Society of Landscape Architects** is volunteering design and planning services through the talents of local landscape architects, and worked with vendors attending the national conference to donate materials and installation for the greenhouse garden.

[www.asla.org](http://www.asla.org)



ASLA

**The American Society of Landscape Architects Potomac Chapter** is working to contribute to local communities and the profession as leaders in the field of landscape architecture. The organization is dedicated to the wide stewardship of land providing community service, public education, and visibility for the profession.

[www.potomacasla.org](http://www.potomacasla.org)



**The Architecture, Construction and Engineering Mentor Program** is providing Coolidge High School students with opportunities to gain real-world planning, design, and construction experience and assists them in pursuing opportunities after graduation.

[www.acementor.org](http://www.acementor.org)



**The Calvin Coolidge High School Alumni Association** is working closely with Coolidge and the surrounding neighborhood to make improvements to the school campus through in-kind and financial donations and maintaining improvements through volunteer efforts.

[www.cchs-aa.com](http://www.cchs-aa.com)



Office of Public Education  
Facilities Modernization

**The Office of Public Education Facilities Modernization** is utilizing best management practices from the public and private sectors to provide District children with safe, healthy, and technologically current learning environments.

[opefm.dc.gov](http://opefm.dc.gov)



**The District Department of the Environment** is using the River Smart Schools program to focus on creating habitat for wildlife, emphasizing the use of native plants, highlighting water conservation, and retaining and filtering stormwater runoff. Their outdoor classroom supports effective teaching practices and promotes student learning.

[www.ddoe.dc.gov](http://www.ddoe.dc.gov)



**The National Society of Black Engineers** is working with Coolidge students interested in pursuing engineering as a career so they can excel academically, succeed professionally, and make a positive impact on their community.

[www.nsbe.org](http://www.nsbe.org)